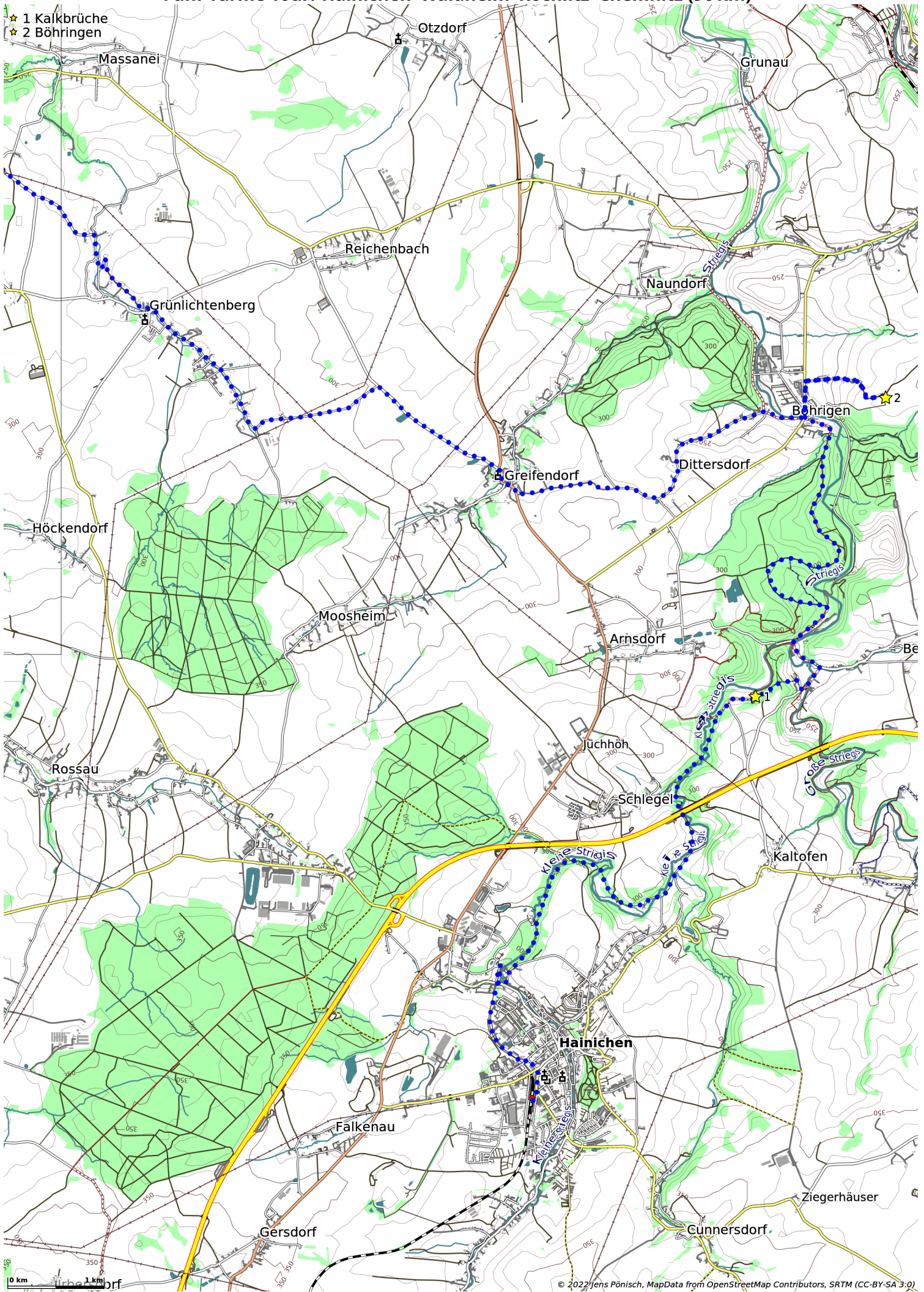
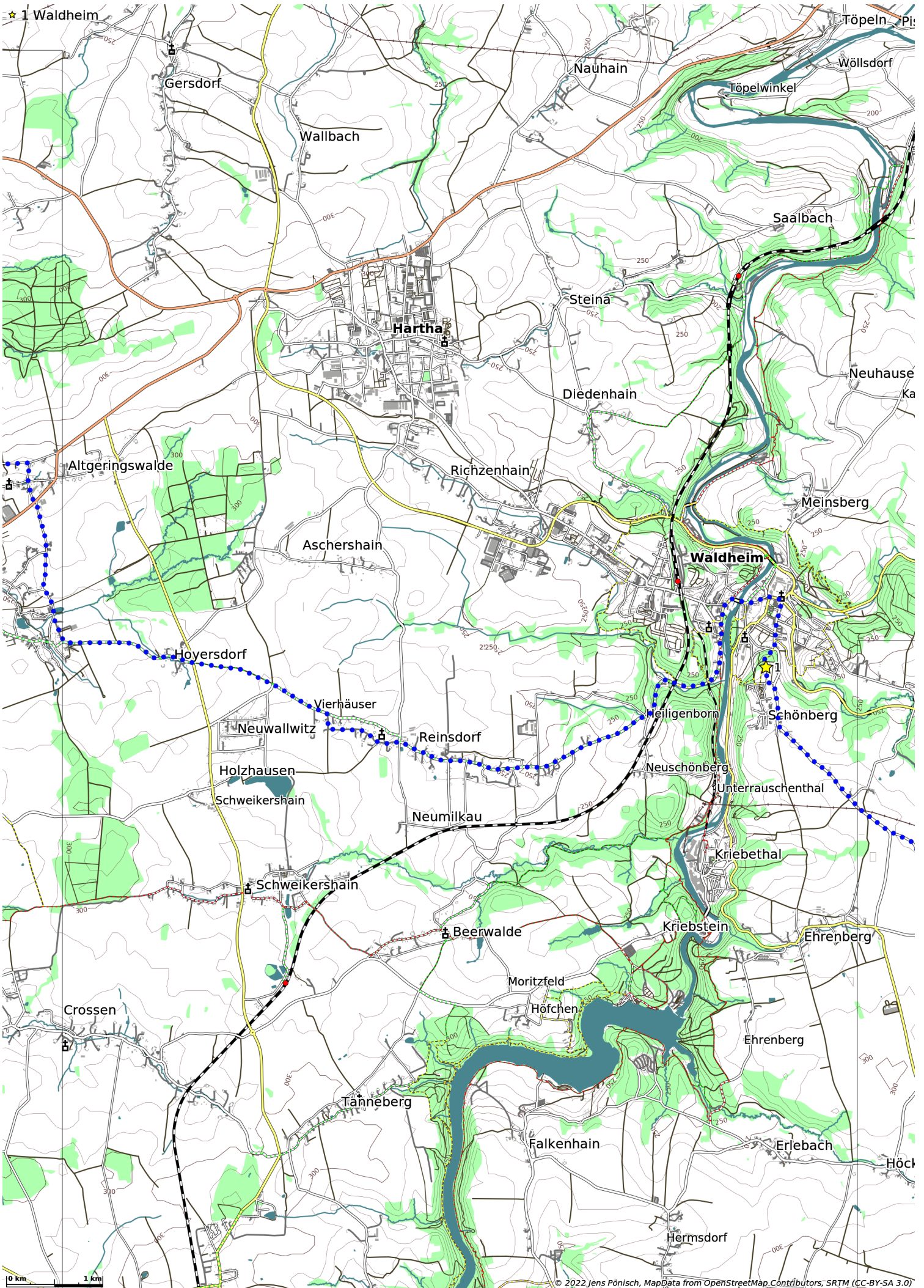


Fünf-Türme-Tour: Hainichen-Waldheim-Rochlitz-Chemnitz (90 km)

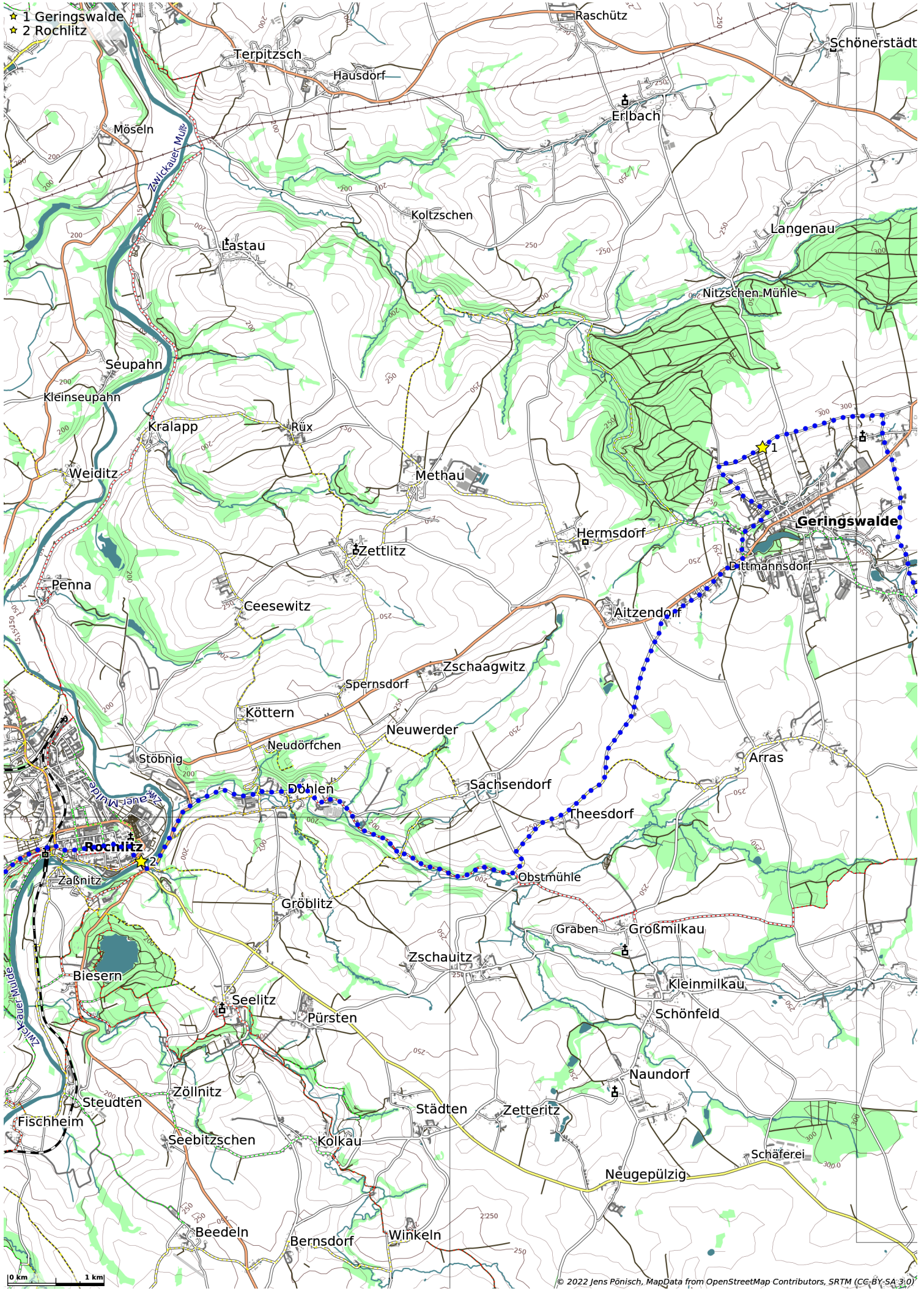
- ★ 1 Kalkbrüche
- ★ 2 Böhringen



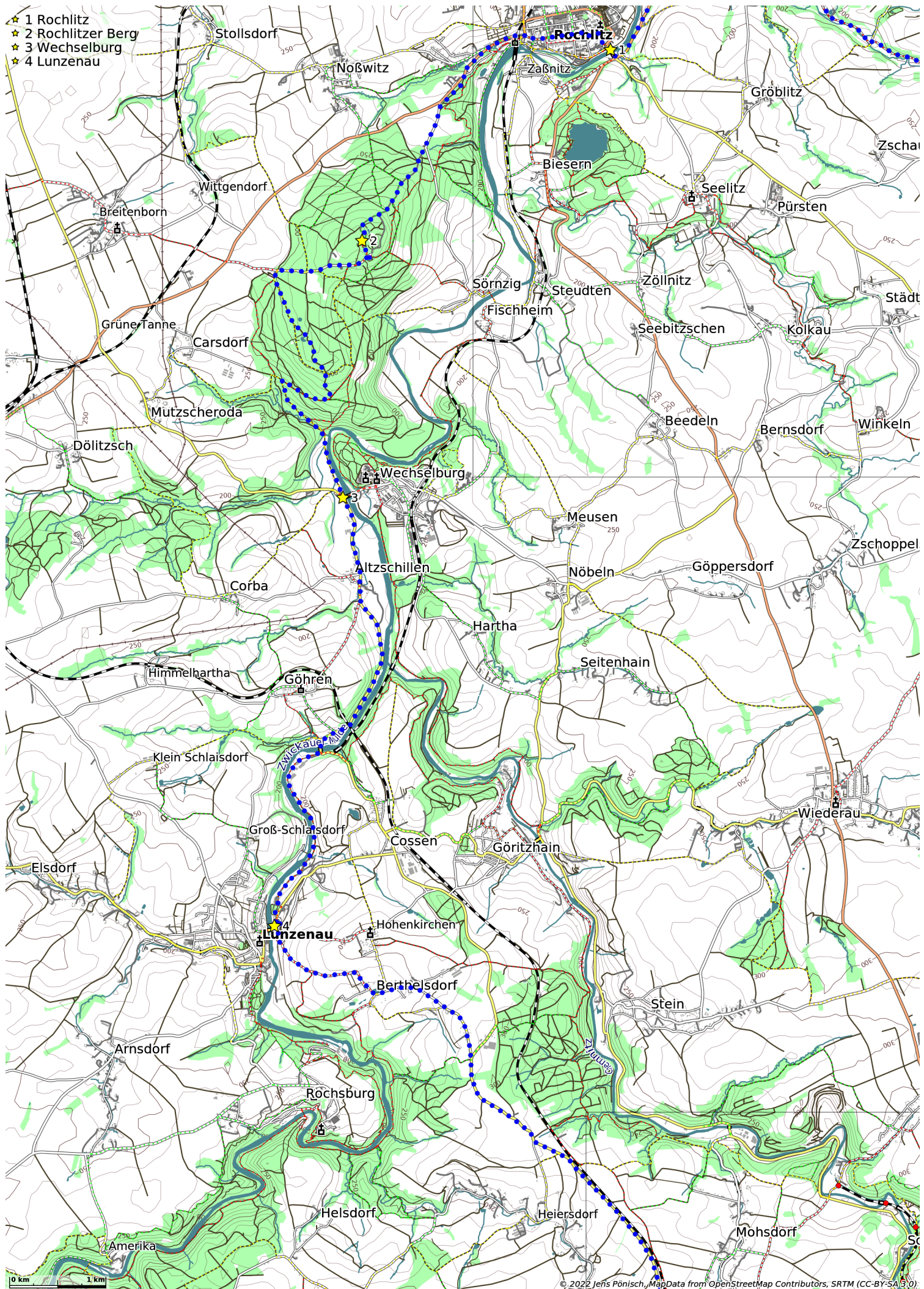
★ 1 Waldheim



- ★ 1 Geringswalde
- ★ 2 Rochlitz



- ★ 1 Rochlitz
- ★ 2 Rochlitzer Berg
- ★ 3 Wechselburg
- ★ 4 Lunzenau



0 km 1 km

