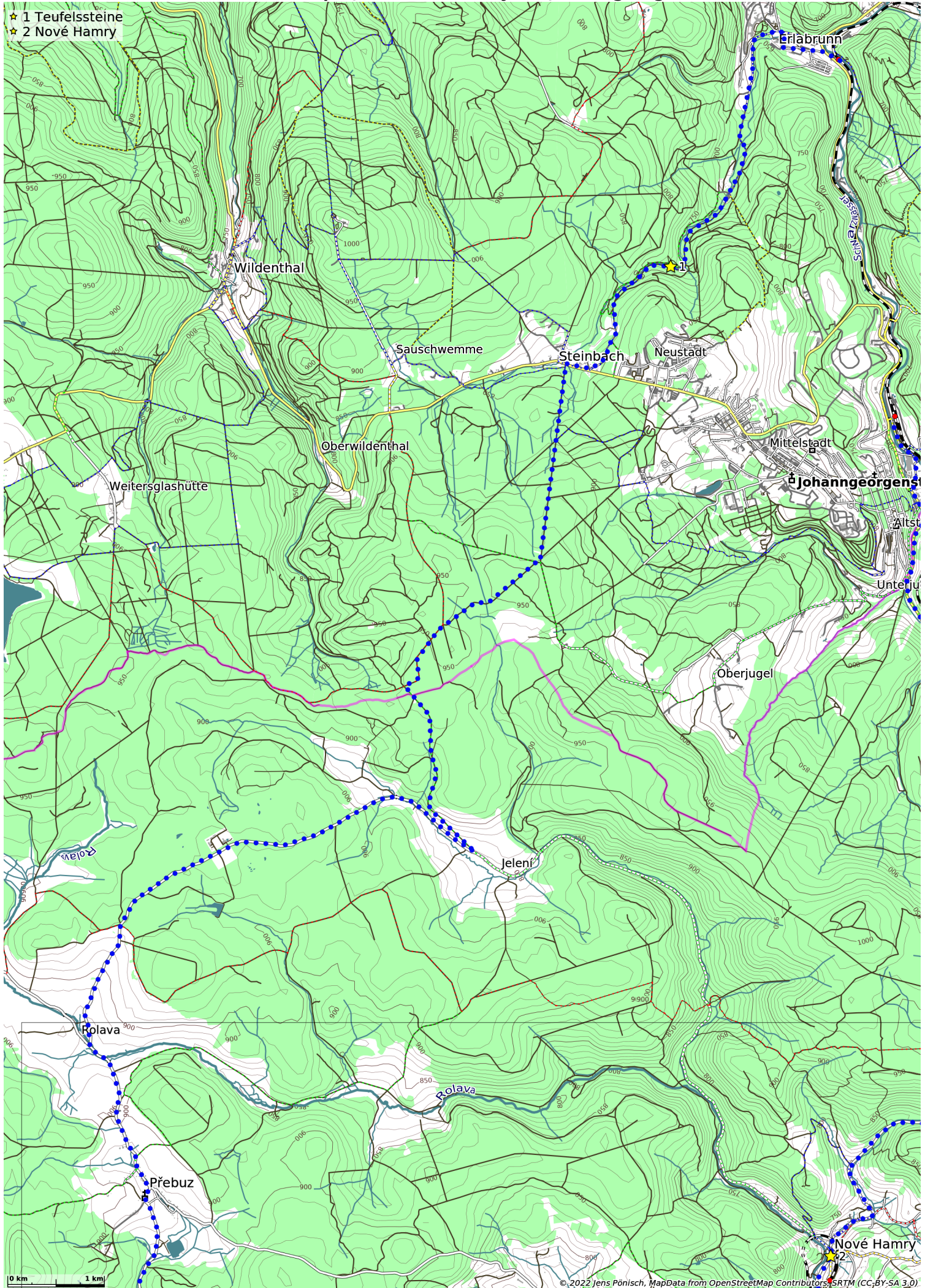
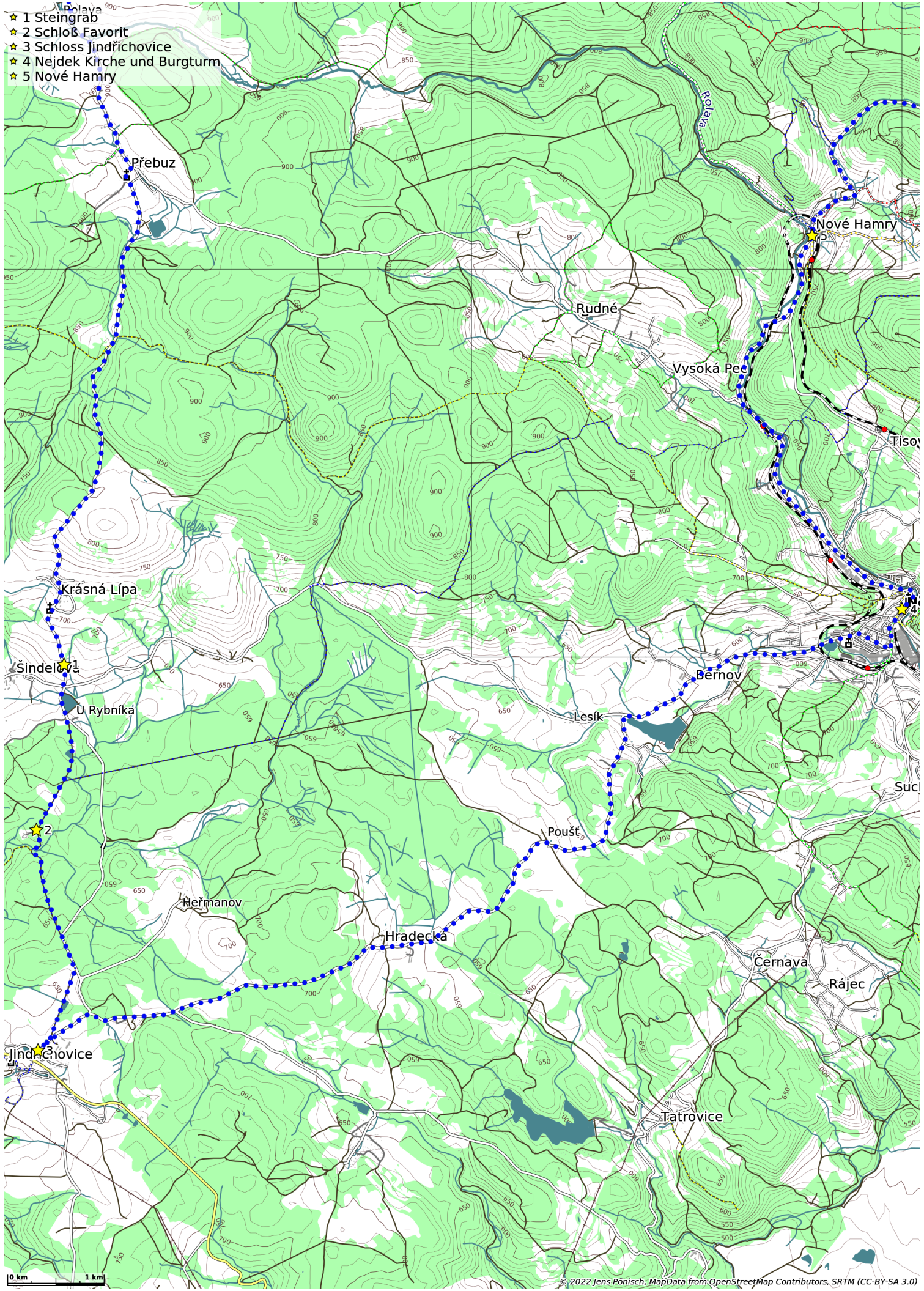


Teufelssteine-Krásná Lipá-Jindřichovice-Nejdek-Johanngeorgenstadt (60 km)

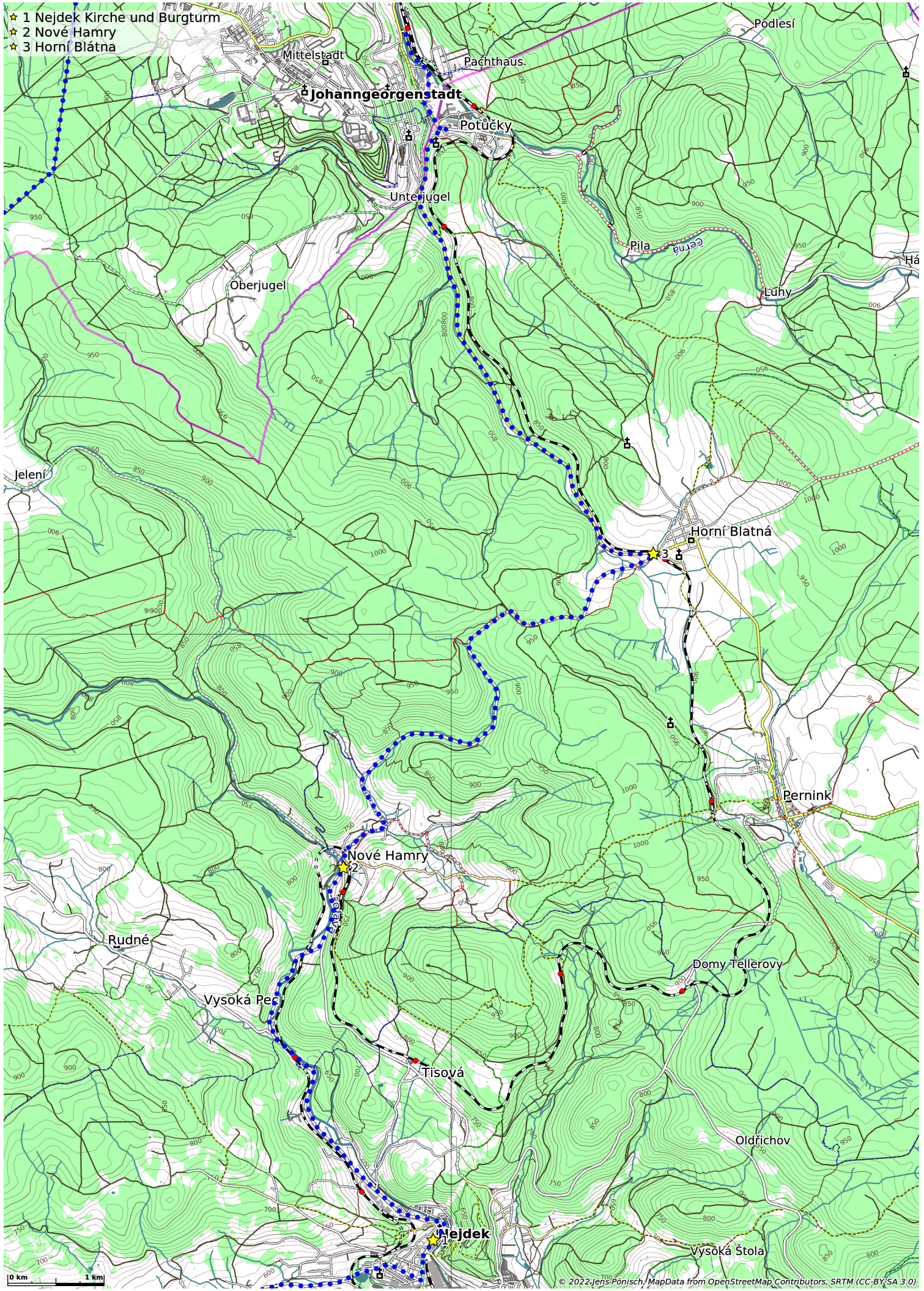
- ★ 1 Teufelssteine
- ★ 2 Nové Hamry



- ★ 1 Steingrab
- ★ 2 Schloß Favorit
- ★ 3 Schloss Jindřichovice
- ★ 4 Nejedek Kirche und Burgturm
- ★ 5 Nové Hamry



- ★ 1 Nejdek Kirche und Burgturm
- ★ 2 Nové Hamry
- ★ 3 Horní Blatná



0 km 1 km